

HOTSPOT Quick Guide for HOTSPOT Access (Windows XP)

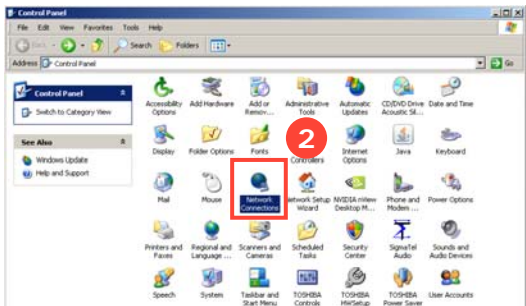
! Please confirm it beforehand!

- Ⓒ Is wireless LAN card driver installed? If it's not, install it following the installation guide of Wireless LAN card.
- Ⓒ Is wireless LAN card inserted firmly to your laptop? Confirm wireless LAN card inserted firmly to PC.

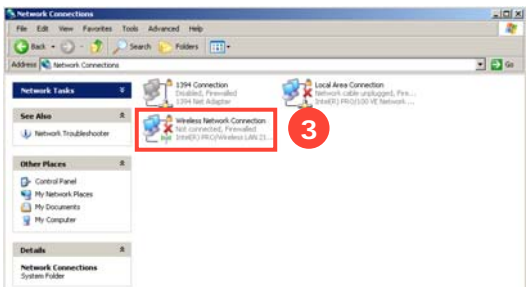
Enable wireless LAN function by turning on the switch when using laptop/PDA with built-in wireless LAN card. Please see your PC/PDA user guide for details.



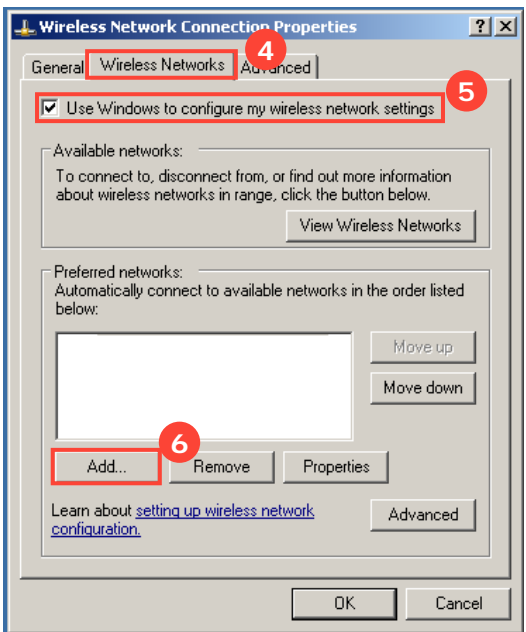
① Wireless LAN Connection



- 1 Select **Control Panel** from **Start** menu.
- 2 Double-click **Network Connections**.

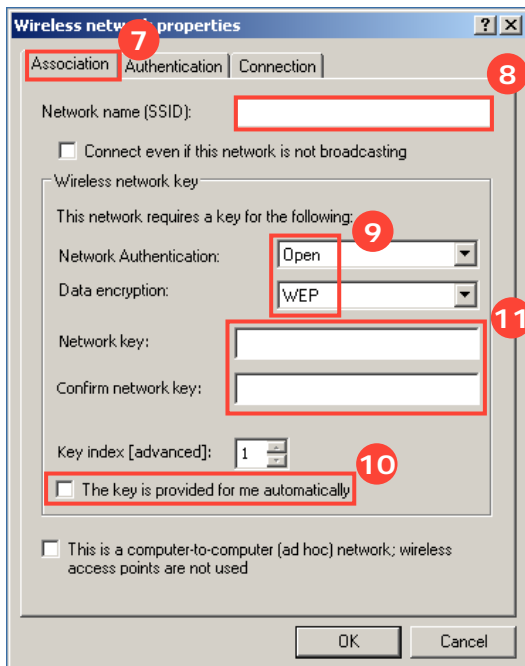


- 3 After **Network Connections** window appears, right-click **Wireless Network Connection** and select **Properties**.

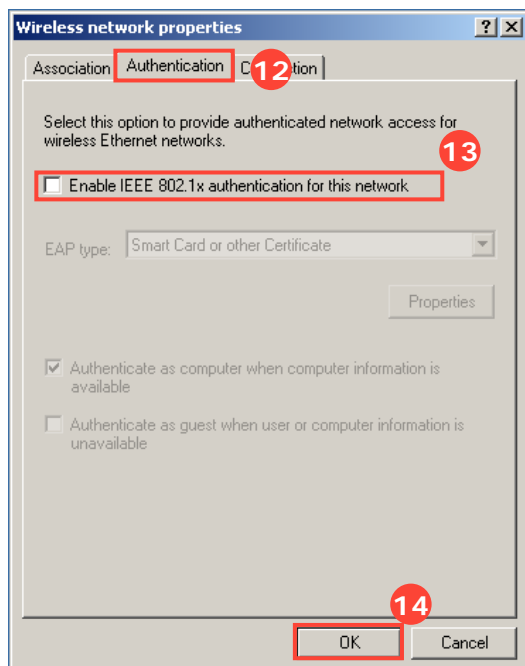


- 4 After **Wireless Network Connection Properties** window appears, select **Wireless Networks** tab.
- 5 Check "Use Windows to configure my wireless network settings".
- 6 Click **Add** button.

※ The window for SP2 is slightly different, from the left picture.



- 7 After **Wireless network properties** window appears, select **Association** tab.
- 8 Input ESS-ID in **Network name (SSID)** : as notified at the registration.
- 9 Select **Open** in **Network Authentication**. Select **WEP** in **Date Encryption**.
- 10 Uncheck "The key is provided for me automatically".
- 11 Input WEP key in **Network key** : and **Confirm network key** : as notified at the registration.



- 12 Select **Authentication** tab.
- 13 Uncheck "Enable IEEE 802.1x authentication for this network."
- 14 Click **OK** button.

Wireless LAN Connection is completed.

② Login at Service Areas

1 Start up your Web Browse to show a login page.

2 If you are a direct customer of NTT Communications, put your **Login ID** and **Password** in the box.

2' If you are a customer of a WBA member operator(*), select your service provider from the pull-down list to show the login page of your home operator.

3 Click **Login** button in the login page.

4 After successful authentication, a welcome page appears.

Customers of a WBA member operator, please select your wireless service provider from the list below.

By logging in, you are a subscriber, and will be deemed to have accepted NTT Com HOTSPOT Acceptable Usage Policy.

Wireless LAN anytime, anywhere.

Which plan can I use HERE?
Please note that service fee and service area may vary according to your service plan.

- HOTSPOT Fix-Rate Plan valid
- HOTSPOT EXPRESS Fix-Rate Plan additional \$15 yen per day (tax included) will be charged.
- 1DAY PASSPORT valid
- 1DAY PASSPORT Express not valid (Please get 1DAY PASSPORT (600 yen per day) instead)
- Subscribers of WBA WISP partners valid

The HOTSPOT Login page has been updated. (Feb. 6, 2009)

For Subscribers of our Affiliate Providers

Service Menu
 - Login
 - Logout
 - Account Balance
 - My Service Area Map
 - My Plan
 - My Profile
 - My History

Support
 - Technical Information
 - Customer Center
 - My Account Information
 - Help

Local Roaming
 - Japan (2009)
 - USA (Jan. 2009)
 - Europe (2009)

Online Sign Up

Wide Coverage in Japan
 NTT Communications is pleased to provide HOTSPOT service to an expanded number of areas. "More details here"

Local For Business Users
 HOTSPOT can be used concurrently with Internet VPN (Virtual Private Network). "More details here"

Login is completed. Enjoy broadband internet access from HOTSPOT.

③ Logout

There are two methods to logout:

1. With logout window (For PC)
2. By typing in the URL for Logout

Please don't forget to logout by either of the methods above.

! Attention!

- Ⓞ You'll be logged out automatically within a few minutes after you go out of wireless coverage or power off your laptop/PDA.
- Ⓞ Please note that you will be charged until you are logged out by system (or by pressing **logout** button) if you subscribe to a metered rate plan.

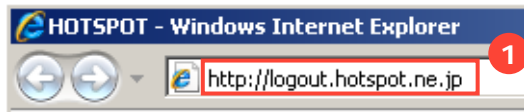
1. Logout window (Only PC)

© NTT Communications

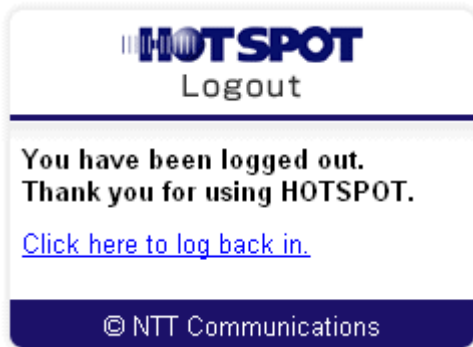
A small logout window is displayed as soon as you are logged in. Then, click **OK** button.

※ This window may not be displayed when you use laptop with **Windows SP2**, or specific kind of web browser.

2. URL for Logout



- 1 Please fill in the address bar of your web browser "<http://logout>" or "<http://logout.hotspot.ne.jp>". The logout window is displayed. Then click **OK** button.



A confirmation message is displayed after your logout is completed.

Logout is completed.

④ Troubleshooting

Case: Can't open Login Page

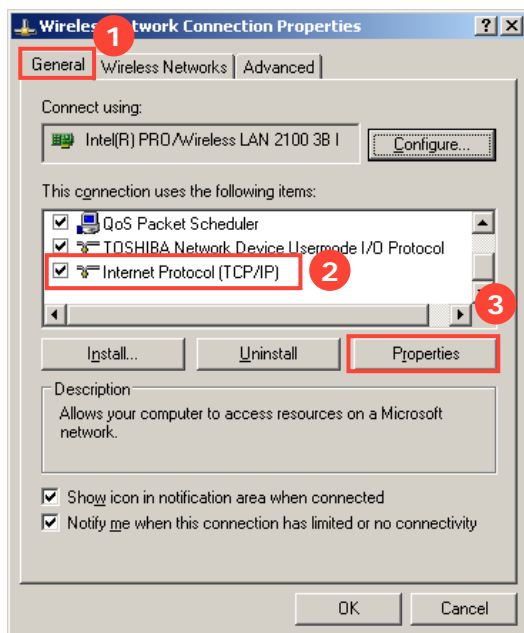
I have configured Wireless LAN settings and opened web browser, but HOTSPOT Login Page didn't appear.

Check the followings configuration.

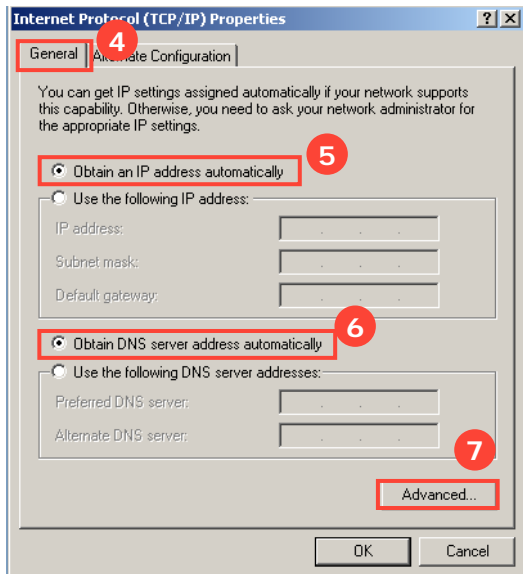
- a. Network Configuration -> See below for details
- b. Web Browser Settings -> See below for details

Did this topic help you to resolve the issue? If no, please call : HOTSPOT Customer Support.

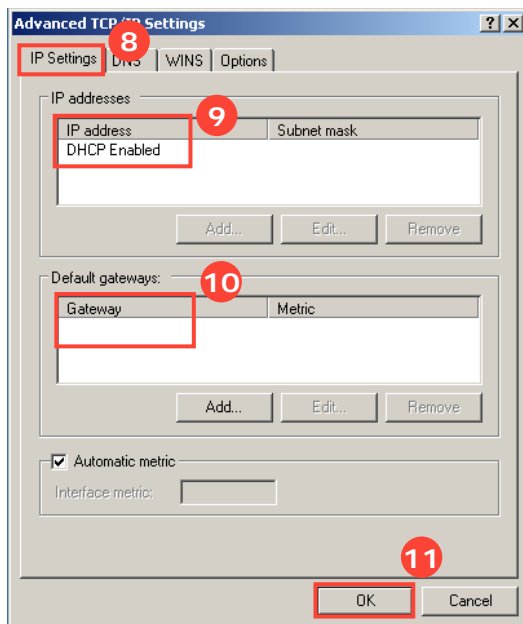
a. Network Configuration.



- 1 Select **General** tab in **Wireless Network Connection Properties** window.
- 2 Select **Internet Protocol (TCP/IP)**.
- 3 Click **Properties** button.



- 4 After **Internet Protocol (TCP/IP) Properties** window appears, select **General** tab.
- 5 Select "Obtain an IP address automatically".
- 6 Select "Obtain DNS server address automatically".
- 7 Click **Advanced...** button.

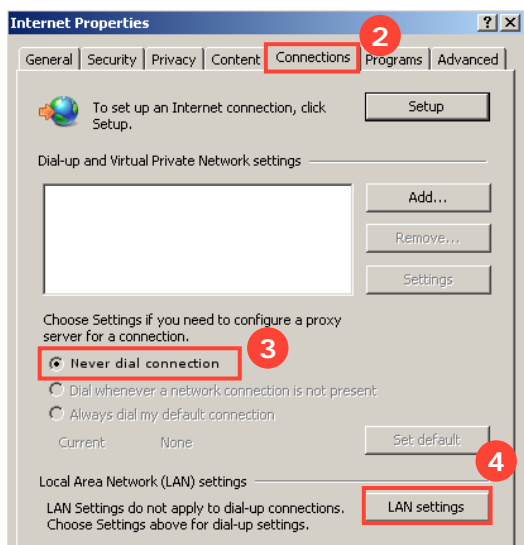


- 8 After **Advanced TCP/IP Setting** window appears, select **IP Setting** tab.
- 9 Confirm **IP address** field is **DHCP Enabled**.
- 10 Confirm **Gateway** field is empty. If not, delete it.
- 11 Click **OK** button in this window and all previously opened windows.

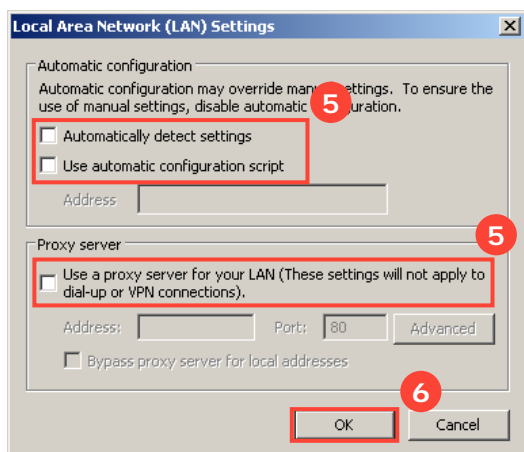
Check Network Configurations is completed.

b. Web Browser Settings

※This part is specific to Internet



- 1 Right-click the icon of internet explorer and select **properties**. (or start up Internet Explorer and select **Internet Options...** on **Tool menu**)
- 2 After **Internet Properties** (or **Internet Options**) window appears, select **Connection** tab.
- 3 Select **Never dial connection**.
- 4 Click **LAN Settings...** button.



- 5 After **Local Area Network (LAN) Settings** window appears, uncheck all the checkboxes of **Automatic configuration** and **Proxy server**.
- 6 Click **OK** button in this window, and **Internet Properties** window.

Web Browser Settings are completed.

HOTSPOT Customer Support

Contact HOTSPOT Customer Support for any questions about configuration or troubleshooting.



0120-815993

Service Hours: 10:00 - 18:00
(Daily except Year-end and New Year holidays)

* You can reach this number with your mobile phone, car phone, and PHS.