



# Quick Guide for HOTSPOT Access using Setup Tool (Windows Vista)

**! Please confirm it beforehand!**

- Ⓞ Is wireless LAN card driver installed? If it's not, install it following the installation guide of Wireless LAN card.
- Ⓞ Is wireless LAN card inserted firmly to your laptop? Confirm wireless LAN card inserted firmly to PC.
- Ⓞ Enable wireless LAN function by turning on the switch when using laptop/PDA with built-in wireless LAN card. Please see your PC/PDA user guide for details.
- Ⓞ This Setup Tool is for windows XP SP2 or later. Please note that windows XP SP1 or earlier not supported.

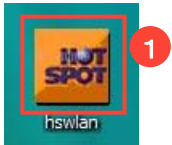
①Wireless LAN Setup

②Login at Service Areas

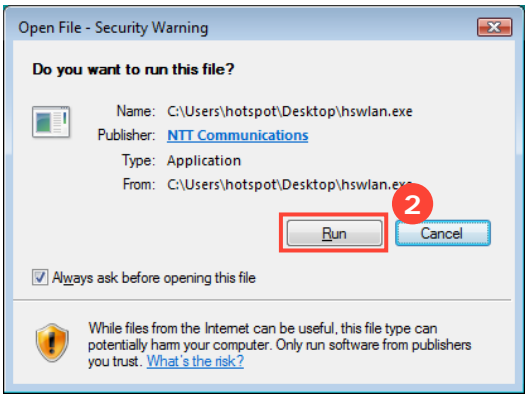
Enjoy Broadband Access with HOTSPOT !!

③Logout

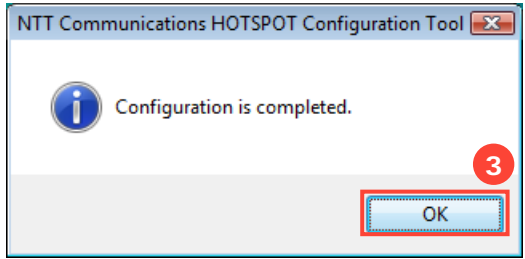
## ①Wireless LAN Setup using "HOTSPOT Setup Tool"



1 Double click the downloaded file **hswlan.exe** to run the Setup Tool.



2 Click **Run** button in the window asking if you want to run the file.



3 Click **OK** button in the completion message window.

Setup is completed.

## ② Login at Service Areas

The screenshot shows the HOTSPOT login interface. Callout 1 points to the top of the page. Callout 2 points to the 'Login ID' and 'Password' input fields. Callout 3 points to the 'Login' button. Callout 4 points to the 'Please select' dropdown menu for WBA member operators. The page includes a 'Wireless LAN anytime, anywhere.' banner, a 'Which plan can I use HERE?' section with various service plans, and a 'For Subscribers of our Affiliate Providers' section.

- 1 Start up your Web Browse to show a login page.
- 2 If you are a direct customer of NTT Communications, put your **Login ID** and **Password** in the box.
- 2' If you are a customer of a WBA member operator(\*), select your service provider from the pull-down list to show the login page of your home operator.  
(\* ) T-Mobile Group [T-Mobile Austria, Czech Republic, Netherlands, Germany, UK, USA and T-Home], BT Openzone, StarHub, Telecom Italia, PT Wi-Fi, Tata Indicom Wi-Fi, Maxis, KT NESPOT (as of March. 2009)
- 3 Click **Login** button in the login page.
- 4 After successful authentication, a welcome page appears.

Login is completed. Enjoy broadband internet access from HOTSPOT.

## ③ Logout

There are two methods to logout:

1. With logout window (For PC)
2. By typing in the URL for Logout

Please don't forget to logout by either of the methods above.

### ! Attention!

- Ⓞ You'll be logged out automatically within a few minutes after you go out of wireless coverage or power off your laptop/PDA.
- Ⓞ Please note that you will be charged until you are logged out by system (or by pressing **logout** button) if you subscribe to a metered rate plan.

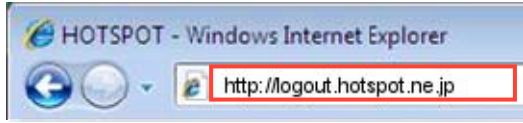
### 1. Logout window (Only PC)

The screenshot shows a 'HOTSPOT Logout' window. The text reads: 'About to log out. Please click the logout button to log out.' A red box highlights the 'Logout' button. The footer says '© NTT Communications'.

A small logout window is displayed as soon as you are logged in. Then, click **OK** button.

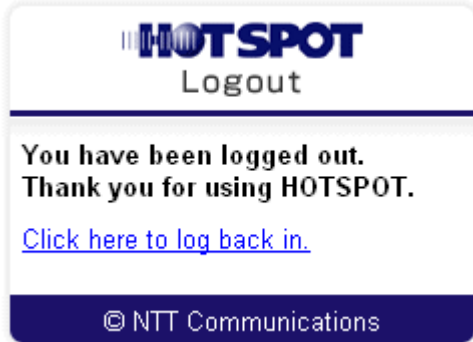
※ This window may not displayed when you use laptop with **Windows SP2**, or specific kind of web browser.

## 2. URL for Logout



**1** Please fill in the address bar of your web browser "<http://logout>" or "<http://logout.hotspot.ne.jp>".

The logout window is displayed. Then click **OK** button.



A confirmation message is displayed after your logout is completed.

Logout is completed.

## HOTSPOT Customer Support

Contact HOTSPOT Customer Support for any questions about configuration or troubleshooting.



**0120-815993**

Service Hours: 10:00 - 18:00  
(Daily except Year-end and New Year holidays)

\* You can reach this number with your mobile phone, car phone, and PHS.