

HOTSPOT

Quick Guide for HOTSPOT Access using Setup Tool (Windows XP SP2 or later)



Please confirm it beforehand!

- Ⓞ Is wireless LAN card driver installed? If it's not, install it following the installation guide of Wireless LAN card.
- Ⓞ Is wireless LAN card inserted firmly to your laptop? Confirm wireless LAN card inserted firmly to PC.
- Ⓞ Enable wireless LAN function by turning on the switch when using laptop/PDA with built-in wireless LAN card. Please see your PC/PDA user guide for details.
- Ⓞ This Setup Tool is for windows XP SP2 or later. Please note that windows XP SP1 or earlier not supported.

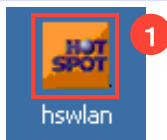
① Wireless LAN Setup

② Login at Service Areas

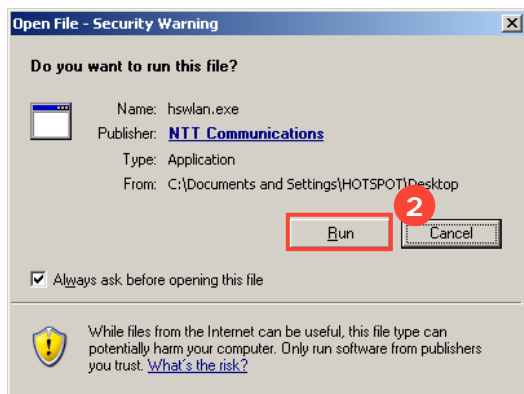
Enjoy
Broadband
Access
with HOTSPOT !!

③ Logout

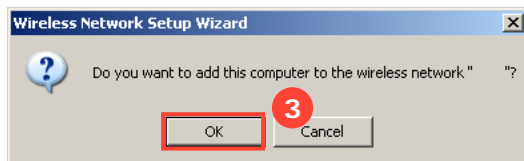
① Wireless LAN Setup using "HOTSPOT Setup Tool"



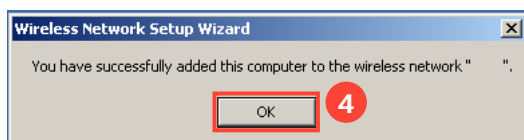
① Double click the downloaded file **hswlan.exe** to run the Setup Tool.



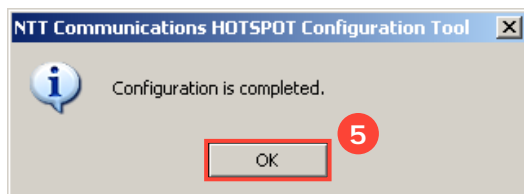
② Click **Run** button in the window asking if you want to run the file.



③ Wireless Network setup wizard is started. Click **OK** button in the confirmation window.



④ Click **OK** button in the success message window.



⑤ Click **OK** in the completion window.

Setup is completed.

② Login at Service Areas

1 Start up your Web Browse to show a login page.

2 If you are a direct customer of NTT Communications, put your **Login ID** and **Password** in the box.

2' If you are a customer of a WBA member operator(*), select your service provider from the pull-down list to show the login page of your home operator.

3 Click **Login** button in the login page.

4 After successful authentication, a welcome page appears.

Login is completed. Enjoy broadband internet access from HOTSPOT.

③ Logout

There are two methods to logout:

1. With logout window (For PC)
2. By typing in the URL for Logout

Please don't forget to logout by either of the methods above.

! Attention!

- Ⓞ You'll be logged out automatically within a few minutes after you go out of wireless coverage or power off your laptop/PDA.
- Ⓞ Please note that you will be charged until you are logged out by system (or by pressing **logout** button) if you subscribe to a metered rate plan.

1. Logout window (Only PC)



A small logout window is displayed as soon as you are logged in. Then, click **OK** button.

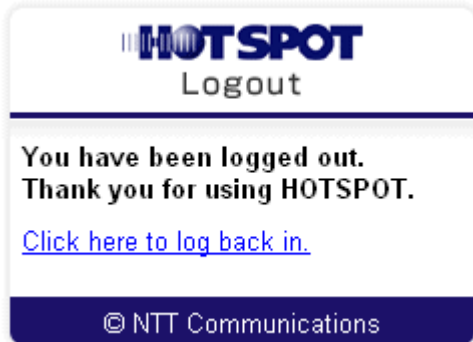
※ This window may not displayed when you use laptop with **Windows SP2**, or specific kind of web browser.

2. URL for Logout



1 Please fill in the address bar of your web browser "<http://logout>" or "<http://logout.hotspot.ne.jp>".

The logout window is displayed. Then click **OK** button.



A confirmation message is displayed after your logout is completed.

Logout is completed.

HOTSPOT Customer Support

Contact HOTSPOT Customer Support for any questions about configuration or troubleshooting.

 **0120-815993**

Service Hours: 10:00 - 18:00
(Daily except Year-end and New Year holidays)

* You can reach this number with your mobile phone, car phone, and PHS.